



Villo67

the urban villas

Strategically located on Paithan Road, your homes at Villo 67 are extremely close to Aurangabad city. The project is well-connected to Beed Bypass, Waluj MIDC, Solapur-Dhule Highway, and Nagpur-Mumbai Highway. So traveling for work will always be a breeze. As a result, you'll have more time to spend with your kids. Everything you need is just a walk away, ensuring great convenience on an everyday basis. The project is surrounded by an elite residential area and has some of the best schools, hospitals, shopping markets and malls in close proximity. Villo 67 is also easily connected by public transport for an easy commute. Your home will also be a great investment in the years to come due to the high appreciation rate in the area. When all the elements of your life come seamlessly together, life takes a whole new meaning.



Distances

Schools

Ryan International School	100 mtr
Riverdale School	2.9 km
Nath Valley School	2.2 km
Saint John International School	1.4 km
Shamit School	4.0 km

Colleges

Nursing College	300 mtr
Agriculture College	1.5 km
CSMSS College	2 km
Deogiri College	3.8 km

Hospitals

Golden City Hospital	600 mtr
Shanti Nursing Home	1.1 km
Kamalnayan Bajaj Hospital	3.1 km
Patwardhan Hospital	3.7 km
Alpine Hospital	4.0 km

Banks

SBI Kanchanwadi	900 mtr
HDFC Kanchanwadi	1.5 km

Malls

Best Price (Wallmart)	900 mtr
-----------------------	---------

Proximity

Railway Station	3.0 km
Central Bus Stand	5.5 km
Air Port	10.0 km

Sports Facility

BenchMark	3.2 km
Divisional Sports Complex	6.8 km



Villo67
the urban villas







Villo67

the urban villas | amenities

- 1 Designer Entrance Gate with Security Cabin
- 2 Mandir
- 3 Party Lawn
- 4 Kids Zone
- 5 Sports Turf

In today's digital age, we understand the importance of playgrounds and outdoor activities. Therefore, we have shaped your child's playtime with a lot of fun activities. We also invite families to indulge in sports and outdoor interactions so that they celebrate their bonds.

Create lifetime memories with your children and live life, outside your phones and computers. At Villo 67, the environment is so beautiful and captivating that you'll want to keep your gadgets aside and spend quality time with loved ones only! All the amenities are designed to bring people together and make life a blessing.

Here, you can make real connections for life with your friends and family.



- 6 Amphitheater
- 7 Senior Citizen Sit Out
- 8 Common Lift with power backup for podium
- 9 Skating Track
- 10 School Bus Stop

Wake up to a radiant sunrise every day and embrace new opportunities to focus on your health, lifestyle, and family. Enjoy the calm and serene surroundings by the temple, or jog your way to a healthier future at the jogging track. Let us take care of all your fitness needs, entertainment, spirituality, and fun!

Modern life can be hectic but at Villo 67, we make it peaceful and blissful. Our residents don't stress because every day is so blessed. Every amenity and aspect has been designed to help you lead a happier, calmer, and smoother lifestyle.

Ready to change your life !



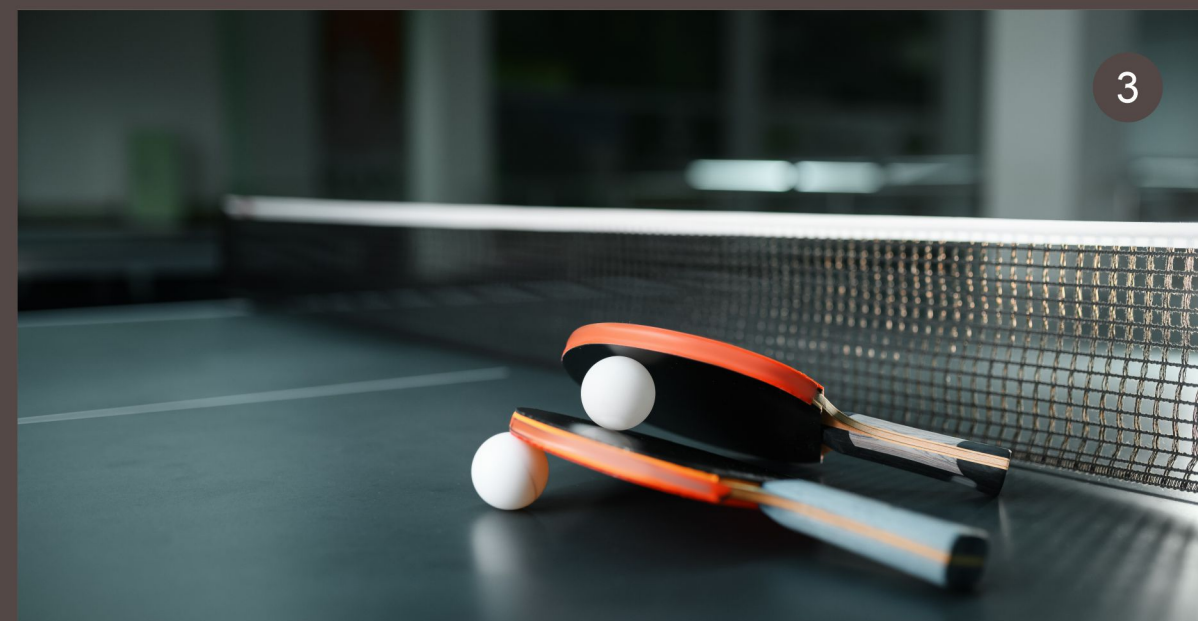


- 1 Mandir
- 2 Sports Turf
- 3 Kids Zone
- 4 Amphitheater
- 5 Party Lawn
- 6 Jogging Track
- 7 Senior Citizen Sit out
- 8 Pergola
- 9 Skating Track

Villo67

the urban villas | facilities*

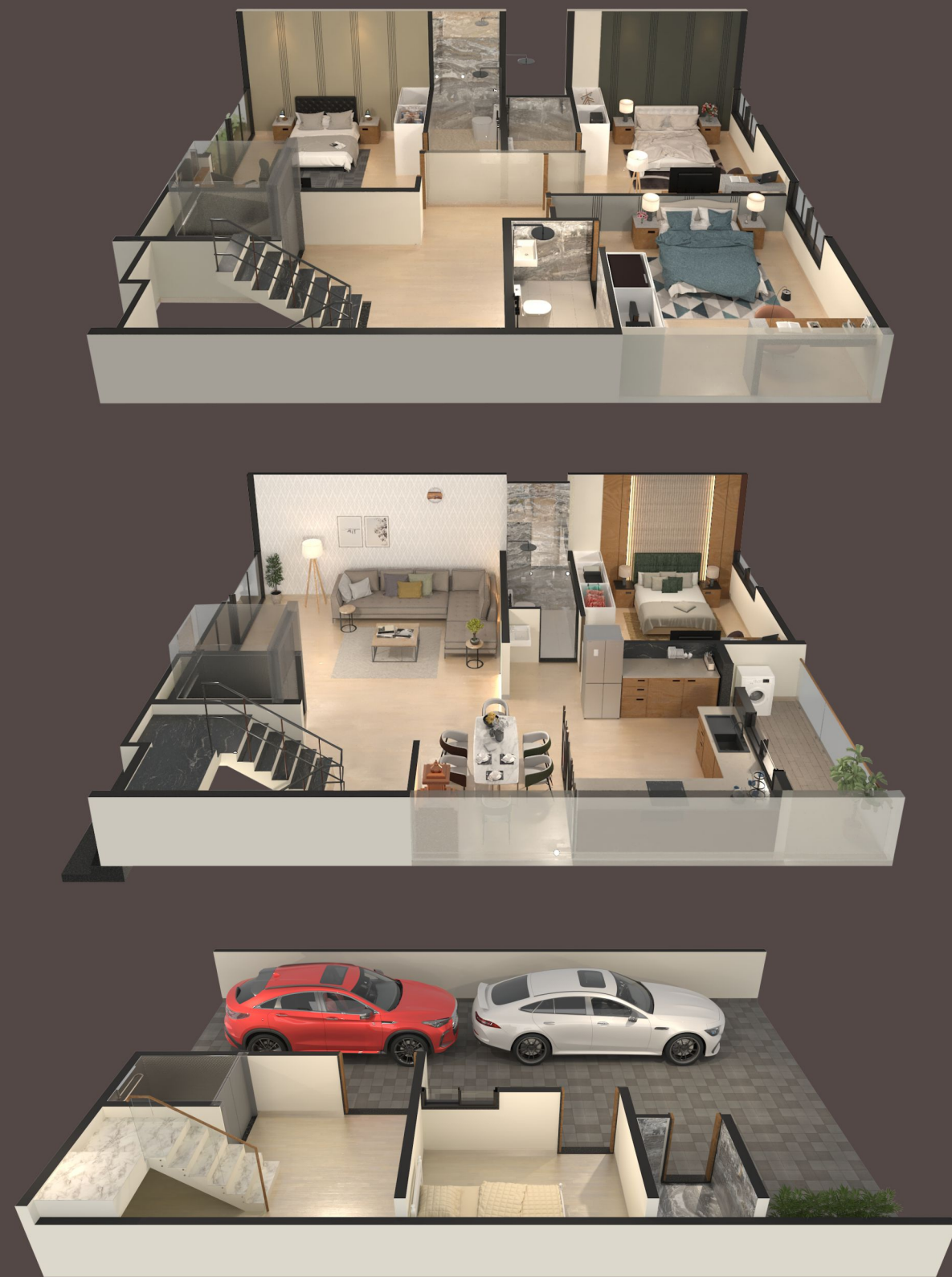
- 1 E-Vehicle at podium for senior citizens
- 2 Gymnasium
- 3 Indoor Games
- 4 Multipurpose Hall



* Facilities are not the part of standard offering of Villo 67, and can be availed on subscription basis at an extra charges.

Disclaimer : The plans, specifications, images, configurations and other details herein are only indicative and the Developer/ Owner reserves rights to change any or all of these at its/ their sole discretion. All images and views are indicative architect's impression and may not be to scale and are for illustration only. The information contained are indicative of the kind of development that is proposed, subject to approval of the authorities or other ones. This does not constitute an offer and/ or a contract of any type between the Developer/ Owner and the Recipients. Any purchaser of this development shall be governed by the terms and conditions of the Agreement for Sale that may be entered into between the parties





cut section

----- SECOND FLOOR

----- FIRST FLOOR

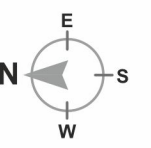
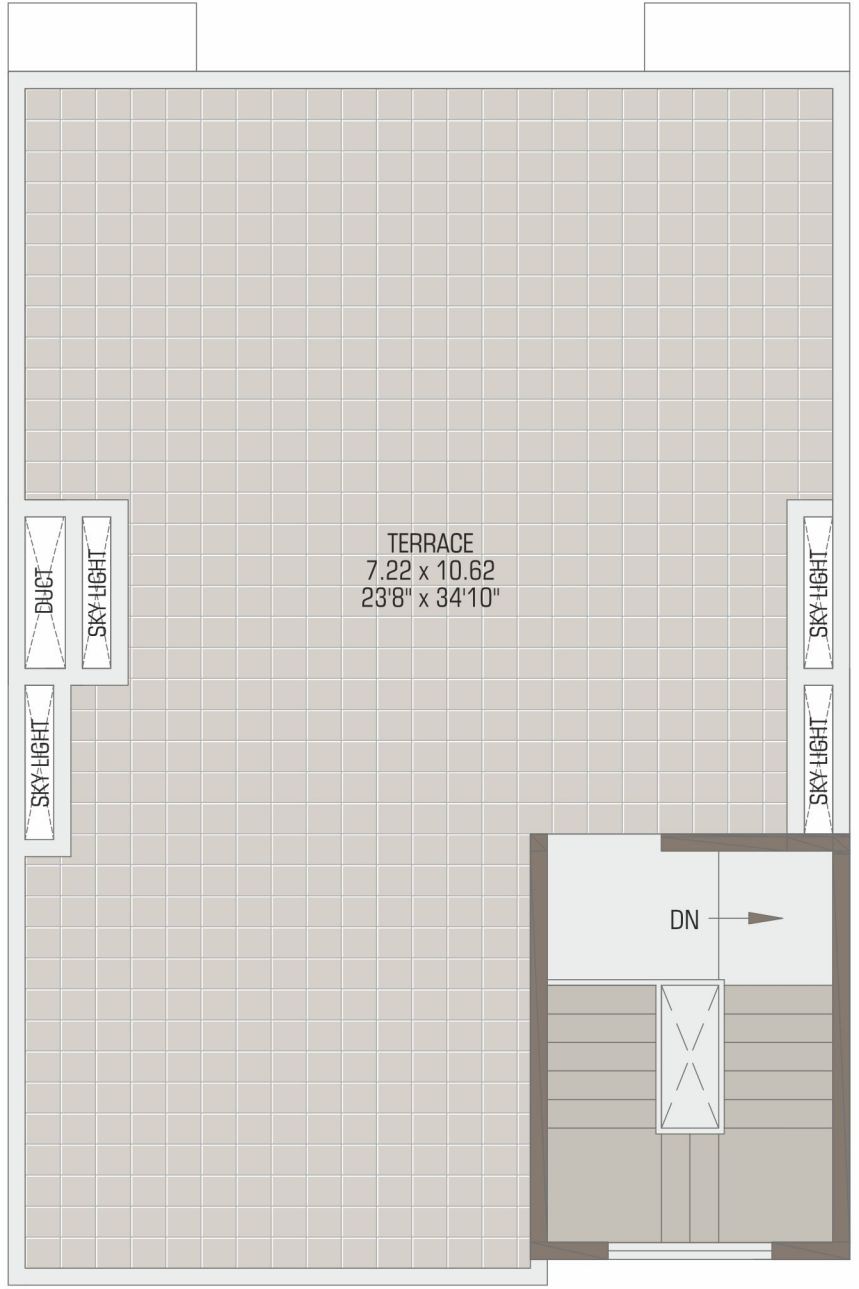
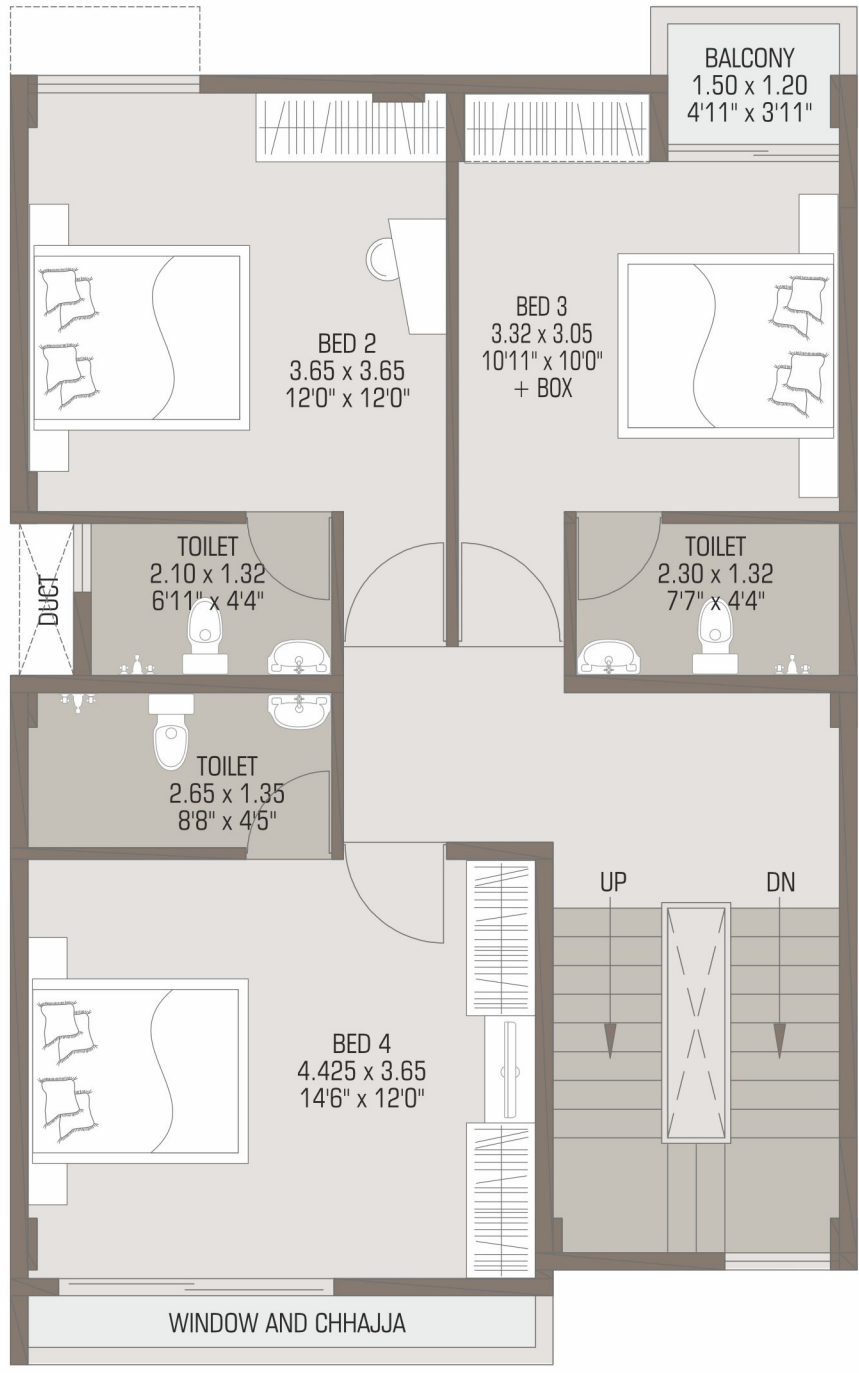
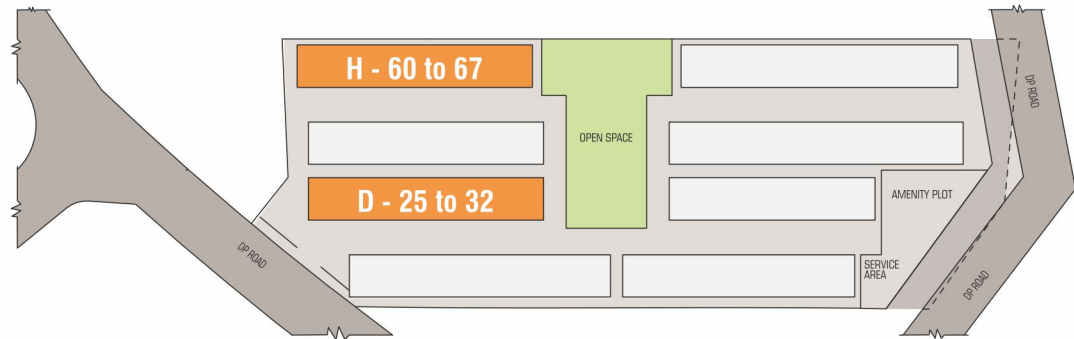
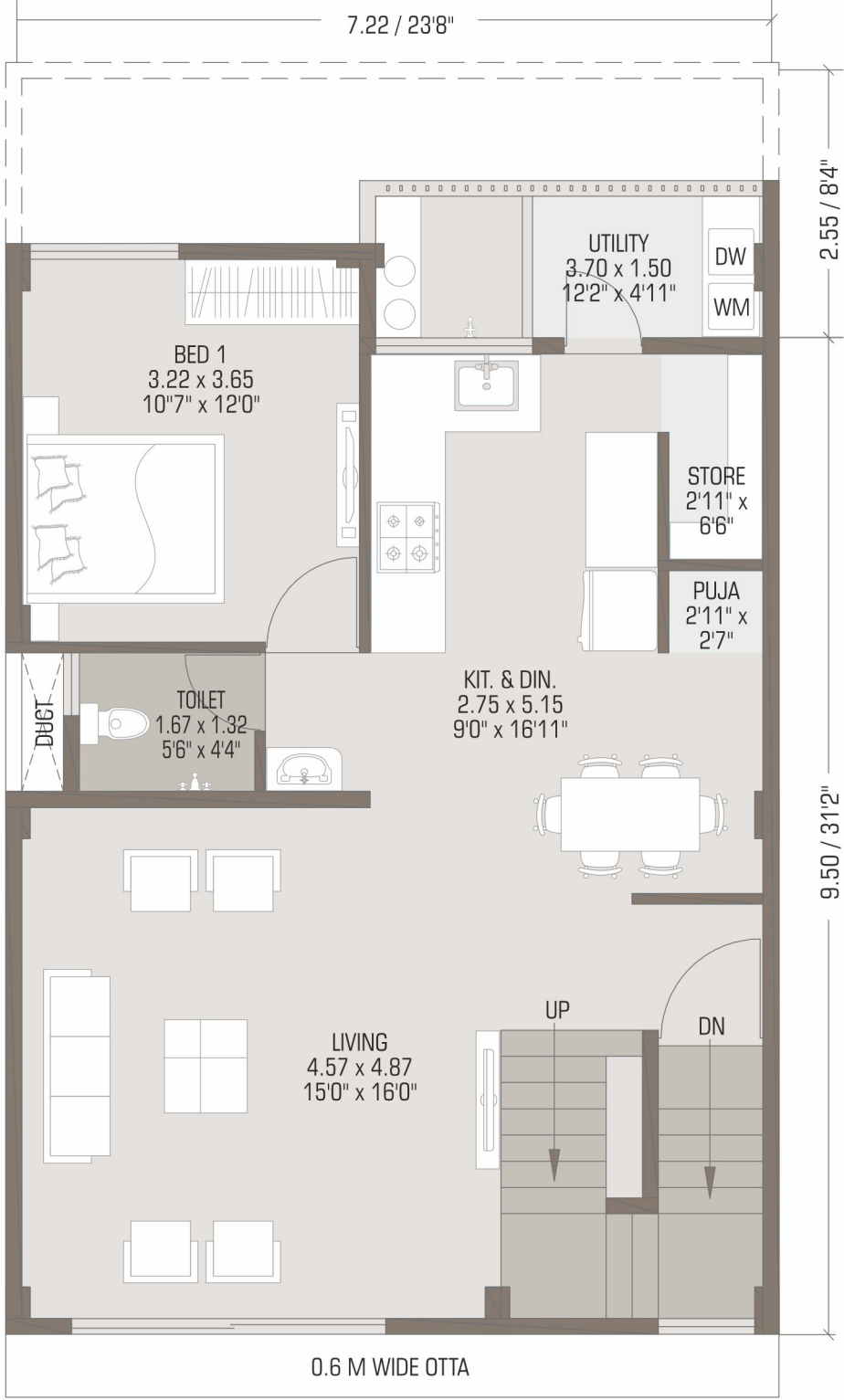
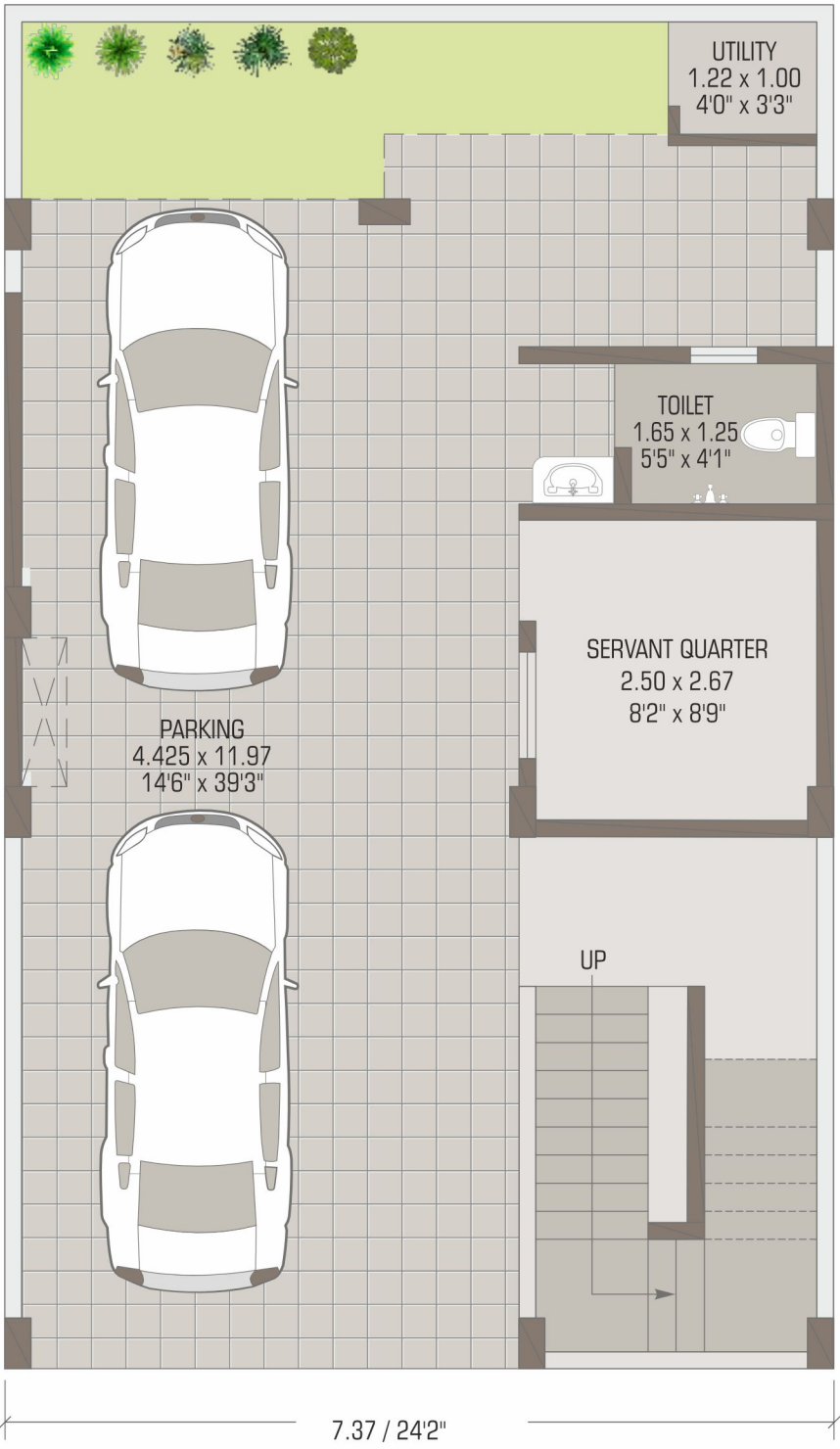
----- PARKING

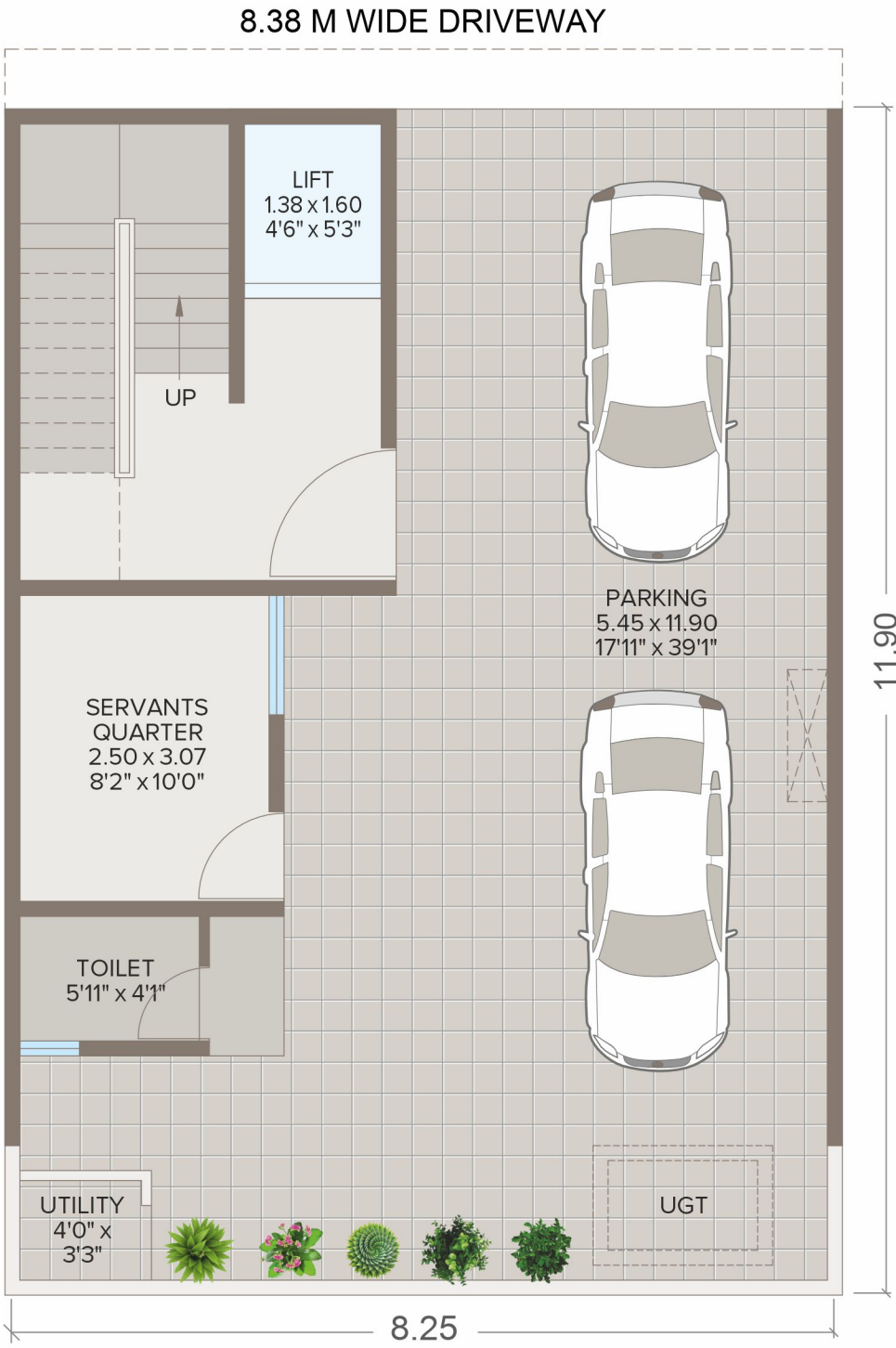


cut section

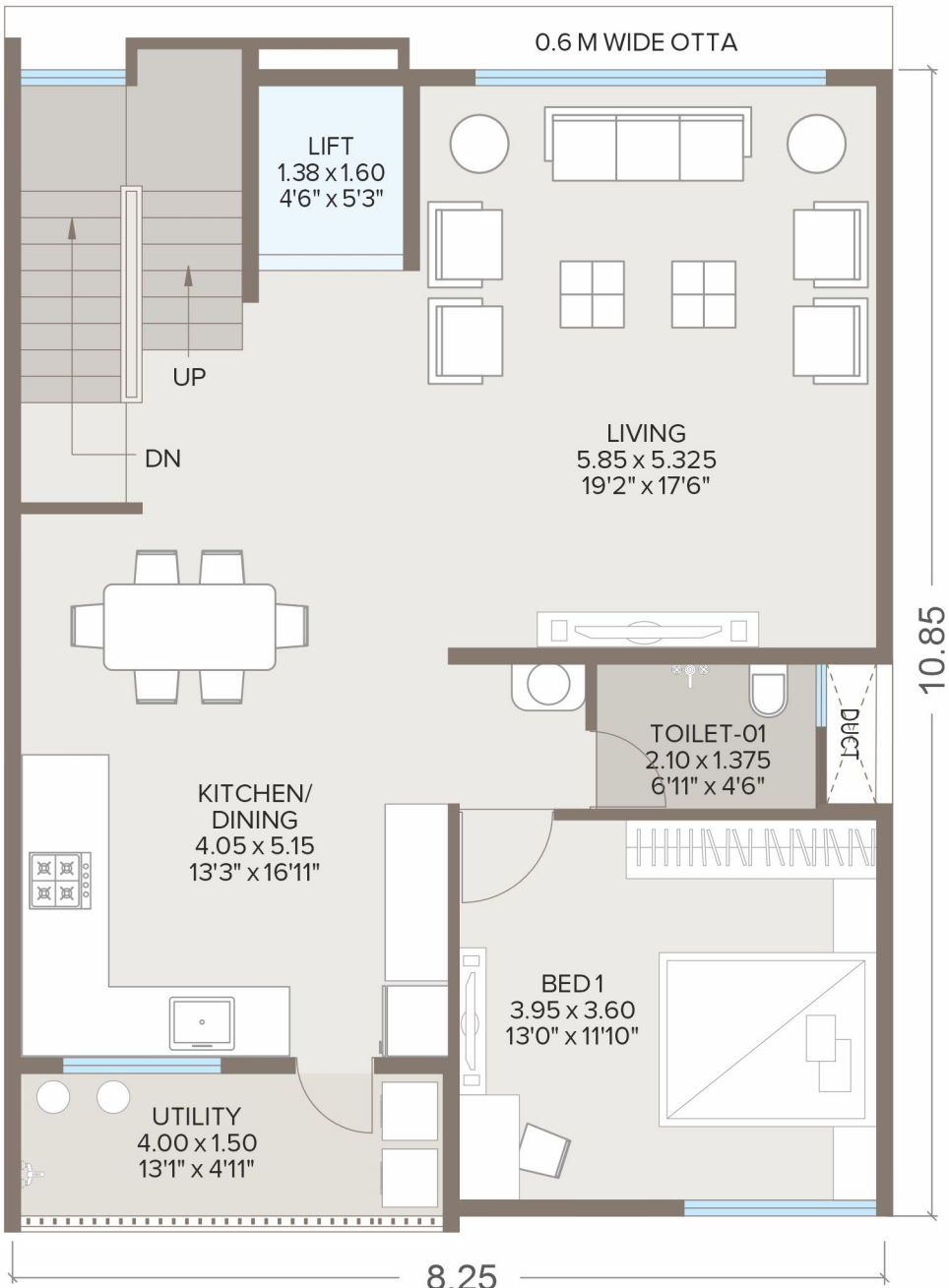
TYPICAL GROUND,
1ST & 2ND FLOOR

A,D,E & H TYPE
ROW HOUSES

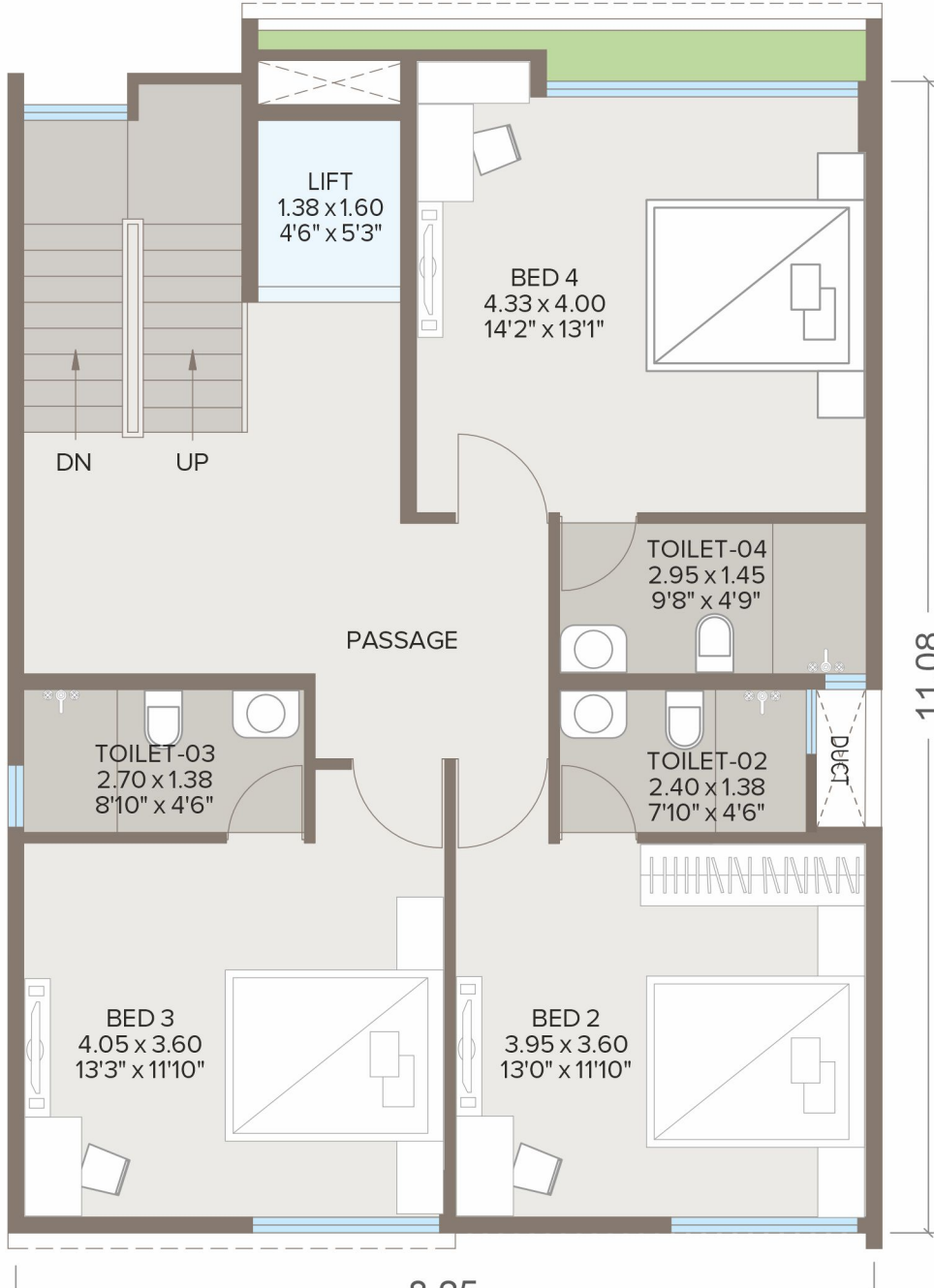
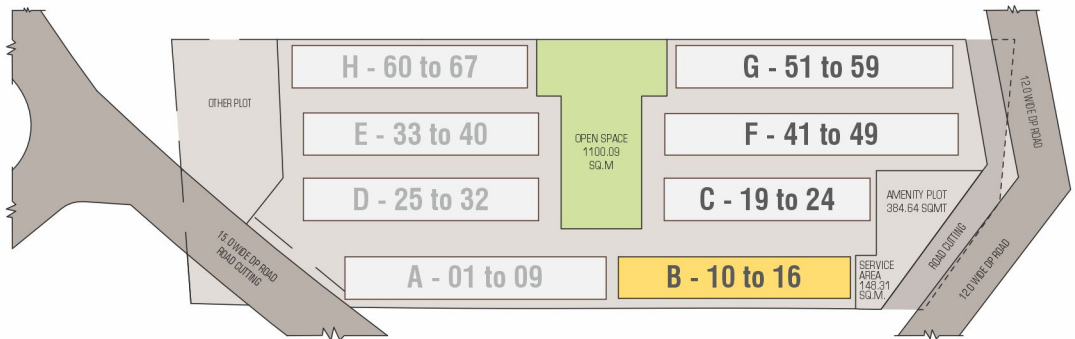




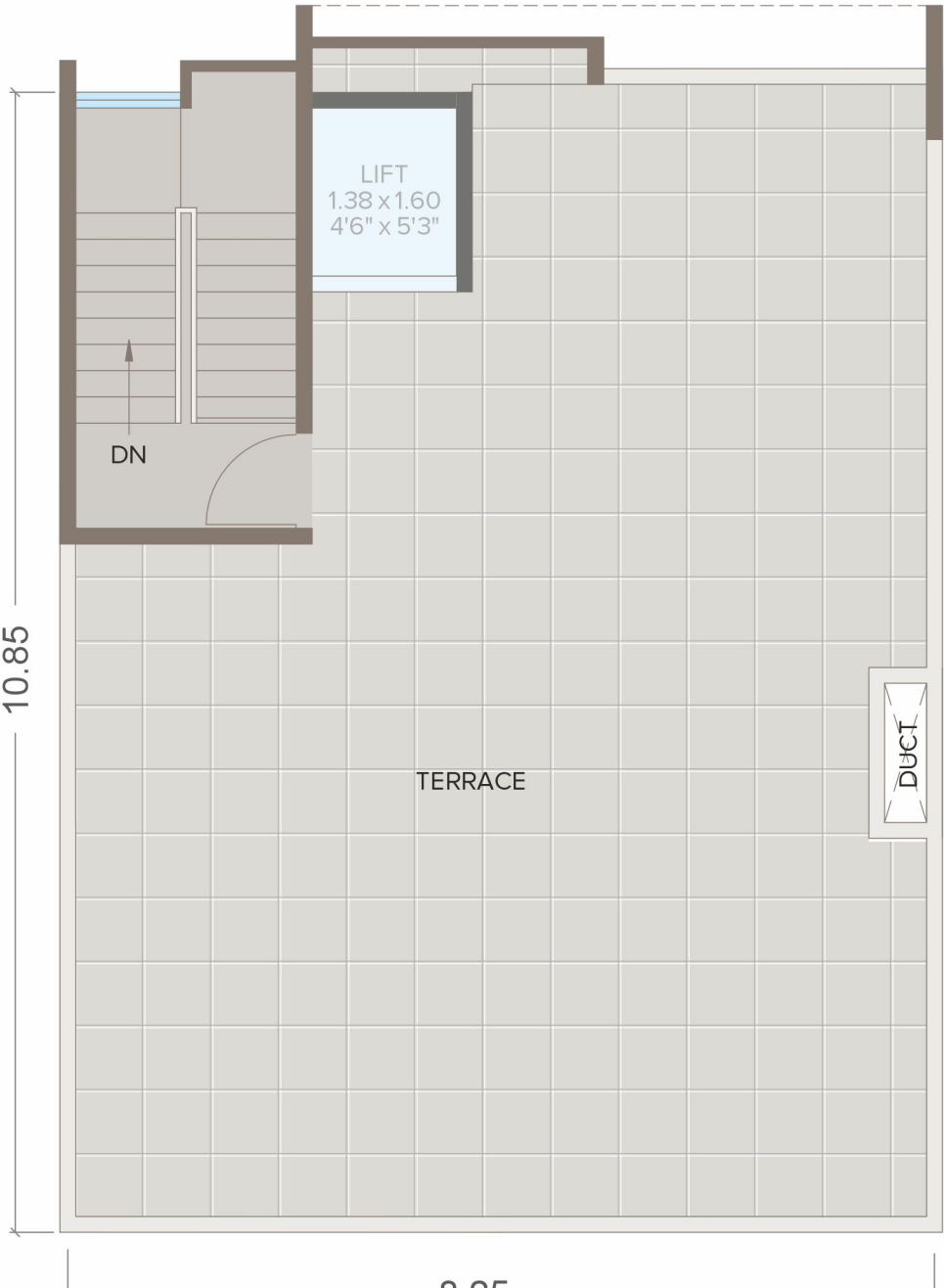
GROUND LEVEL - PARKING FLOOR PLAN



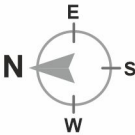
PODIUM LEVEL - FIRST FLOOR PLAN

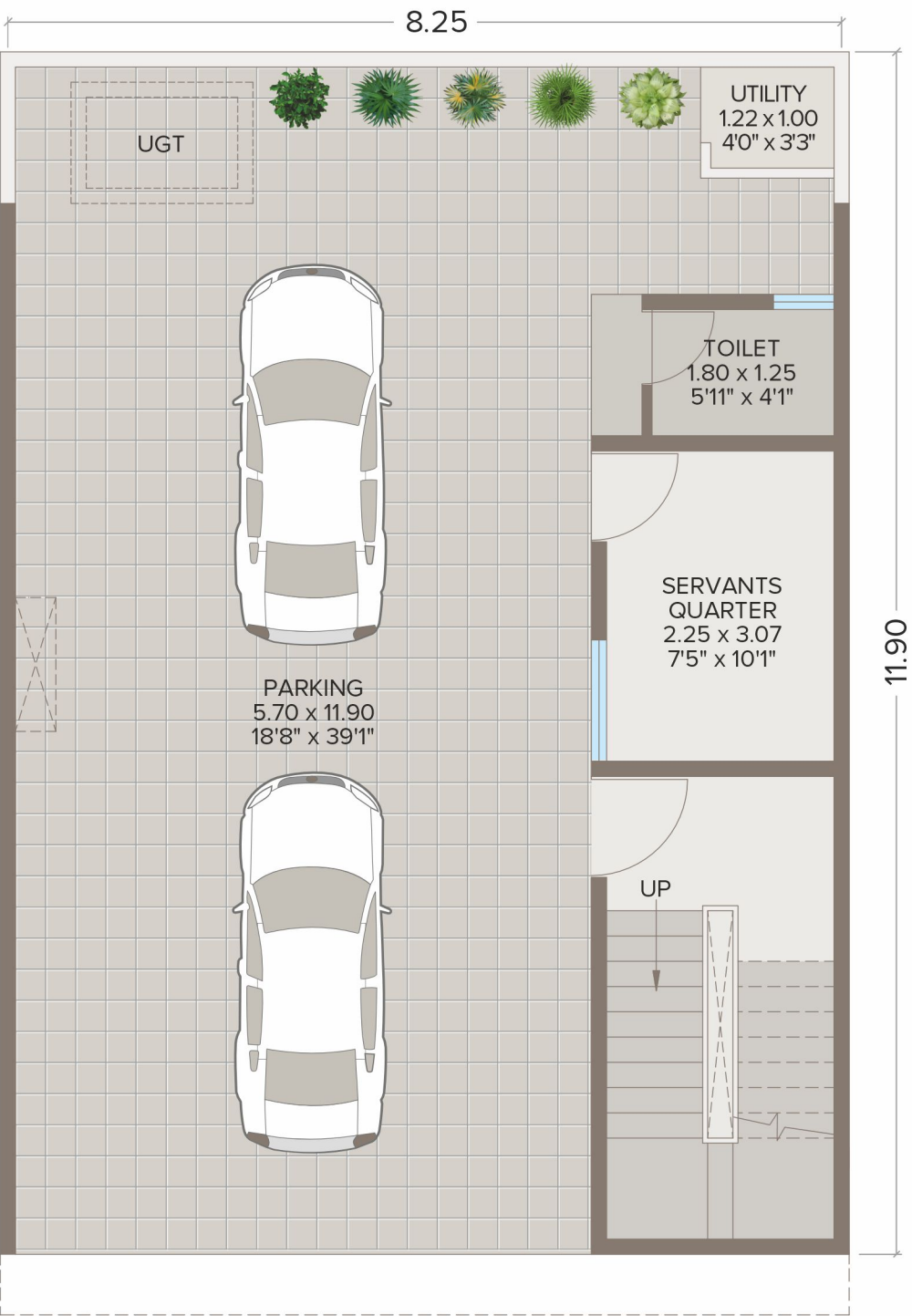


SECOND FLOOR PLAN

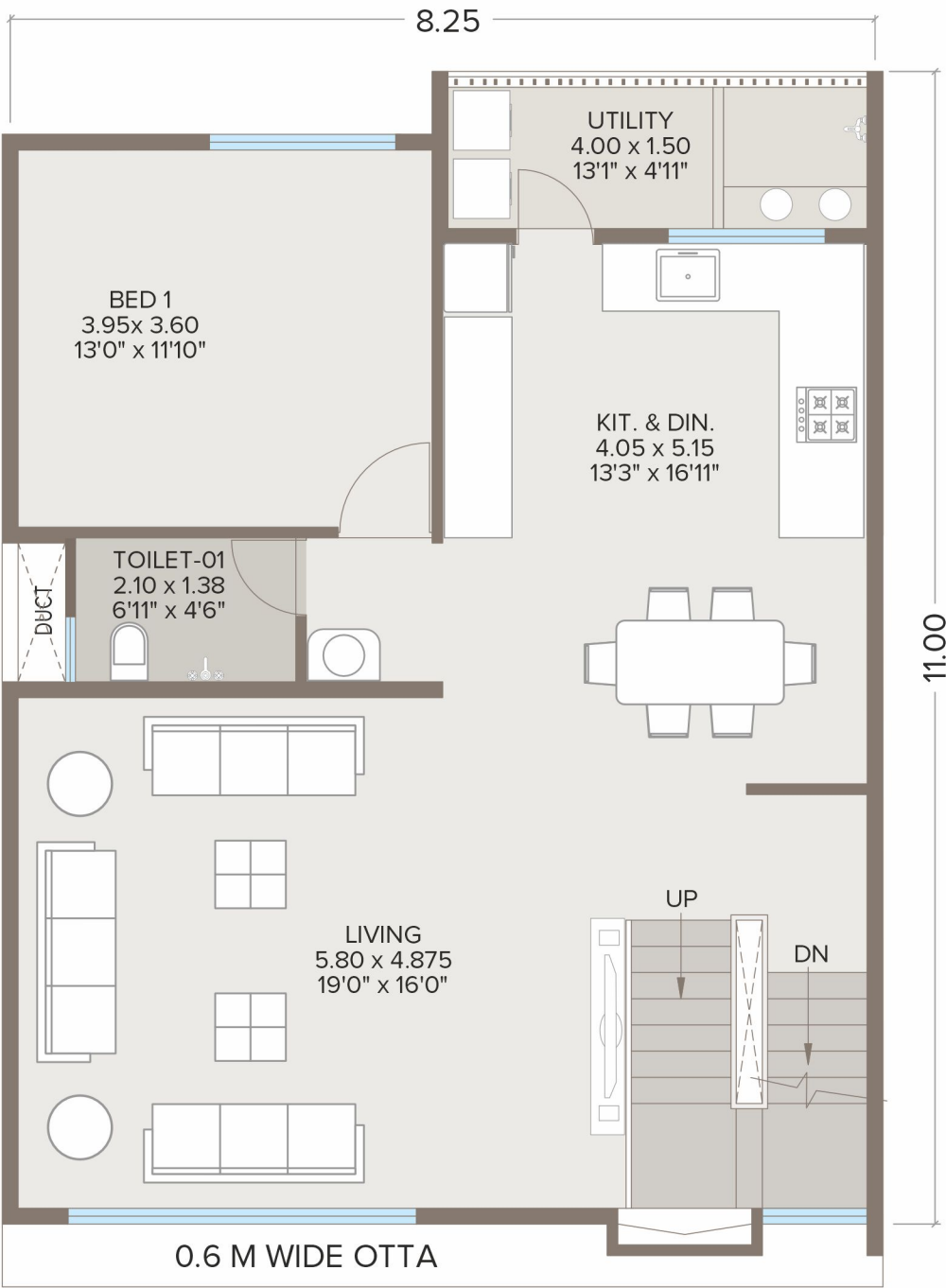


TERRACE FLOOR PLAN

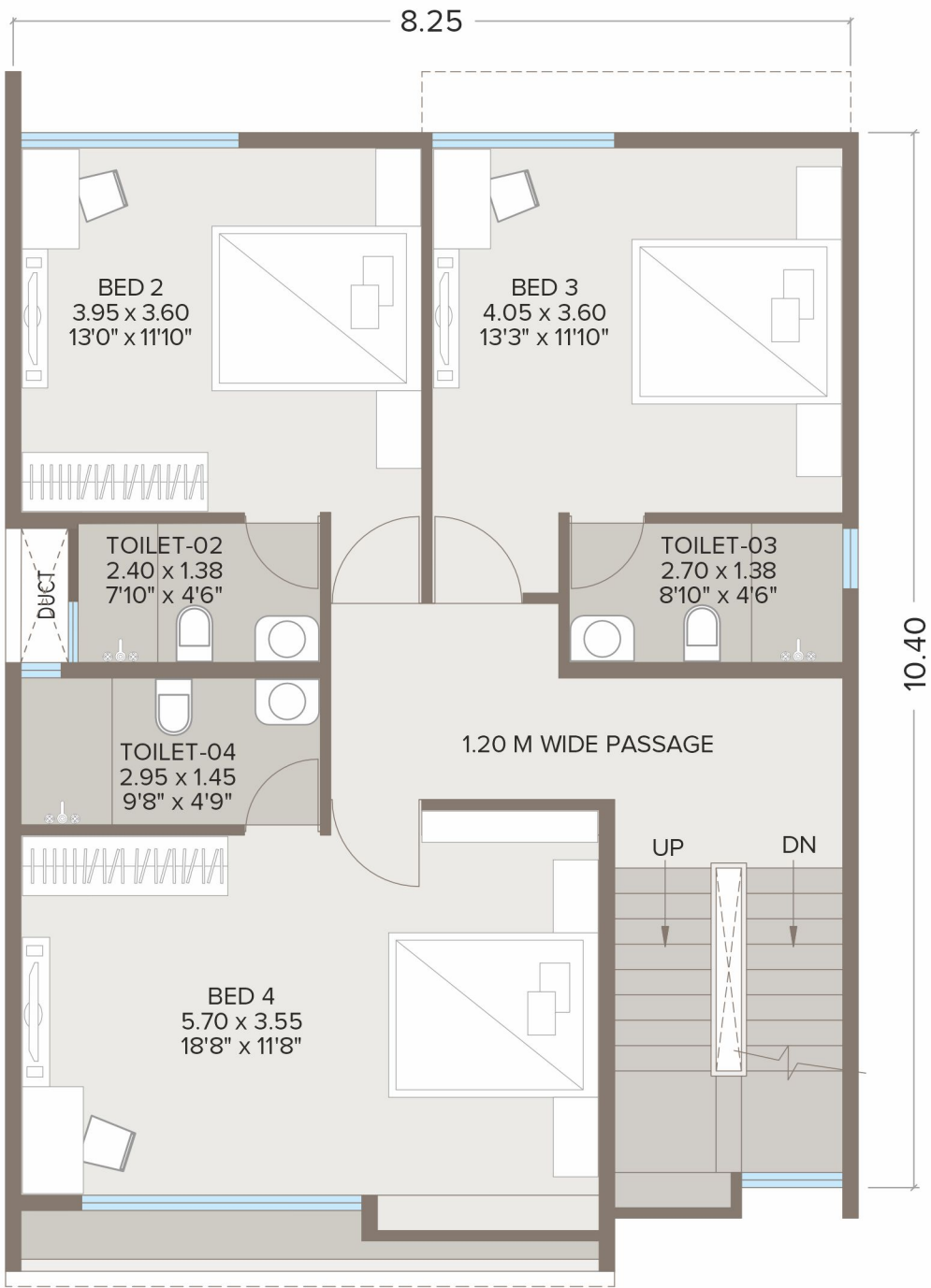
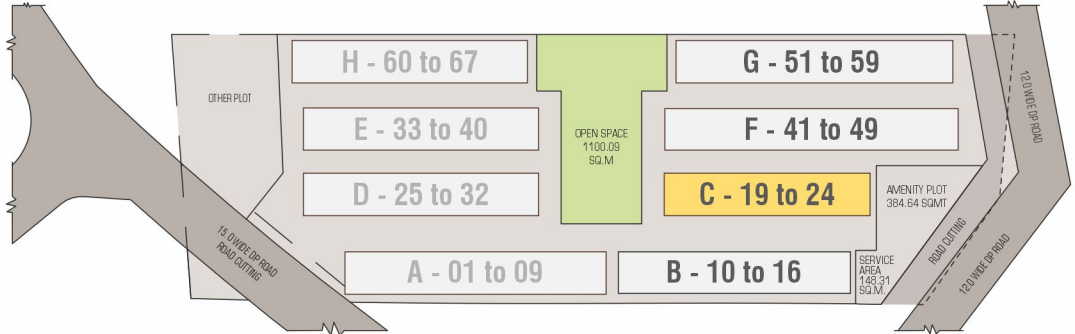




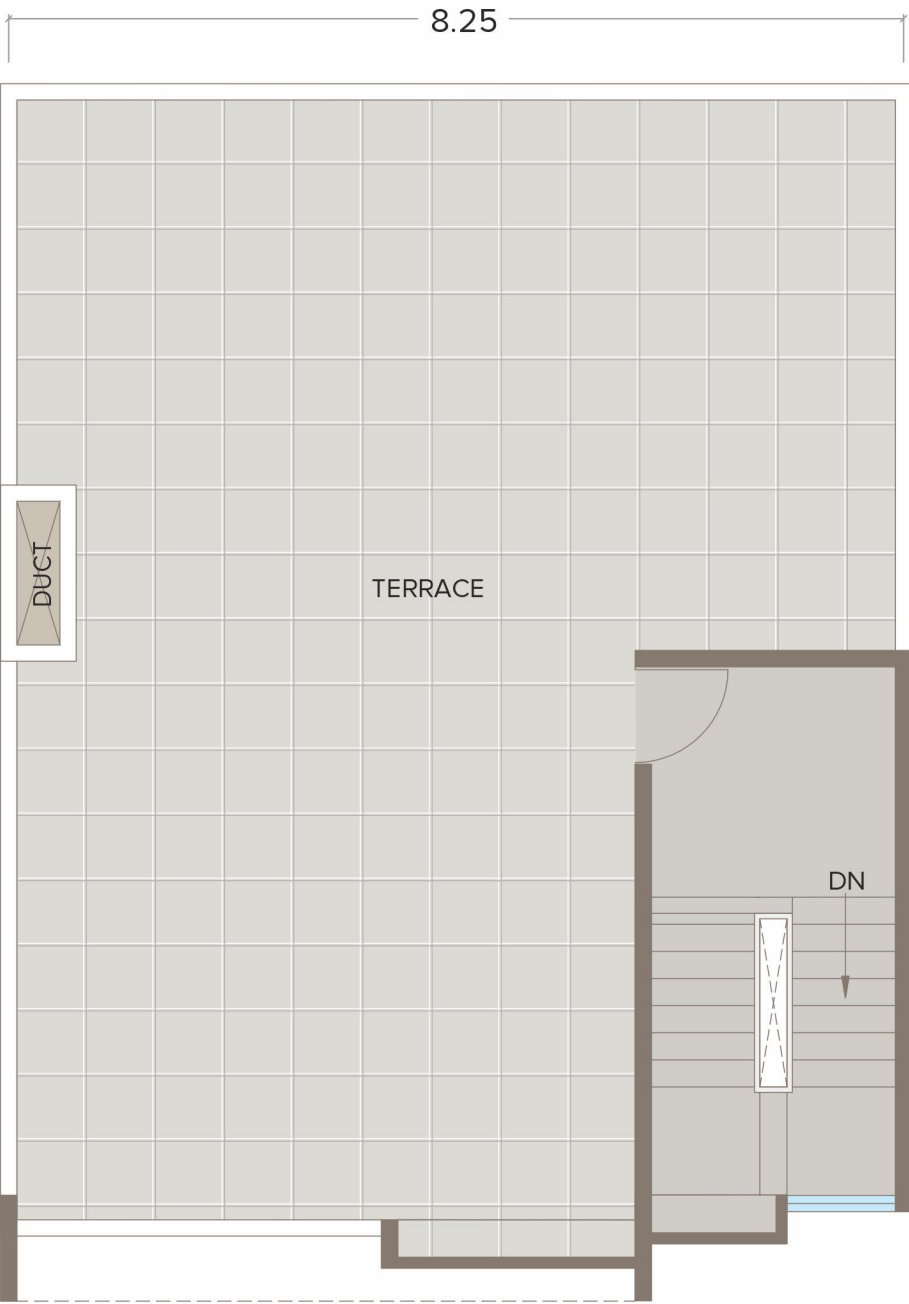
GROUND LEVEL - PARKING FLOOR PLAN



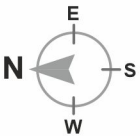
PODIUM LEVEL - FIRST FLOOR PLAN

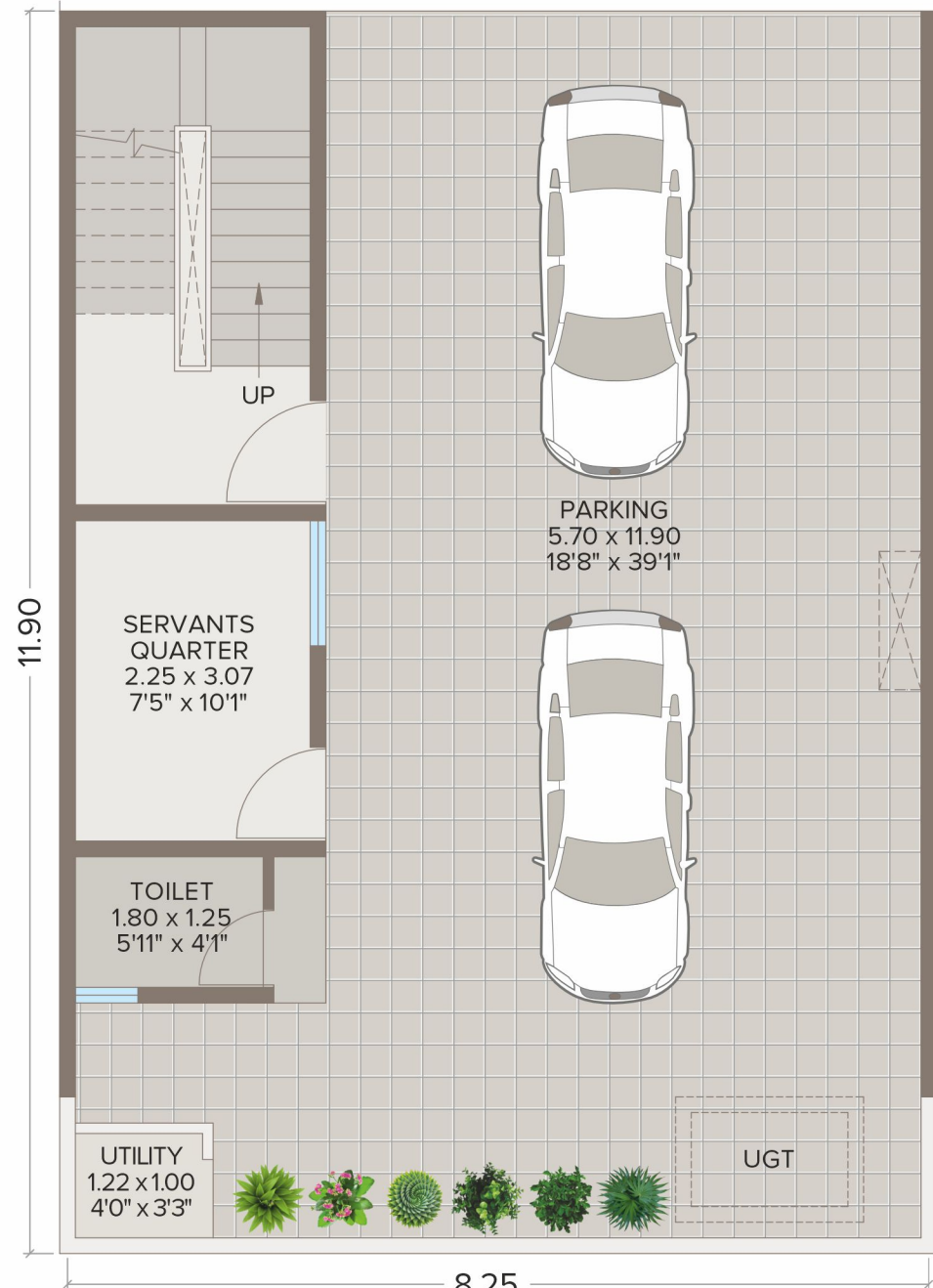


SECOND FLOOR PLAN

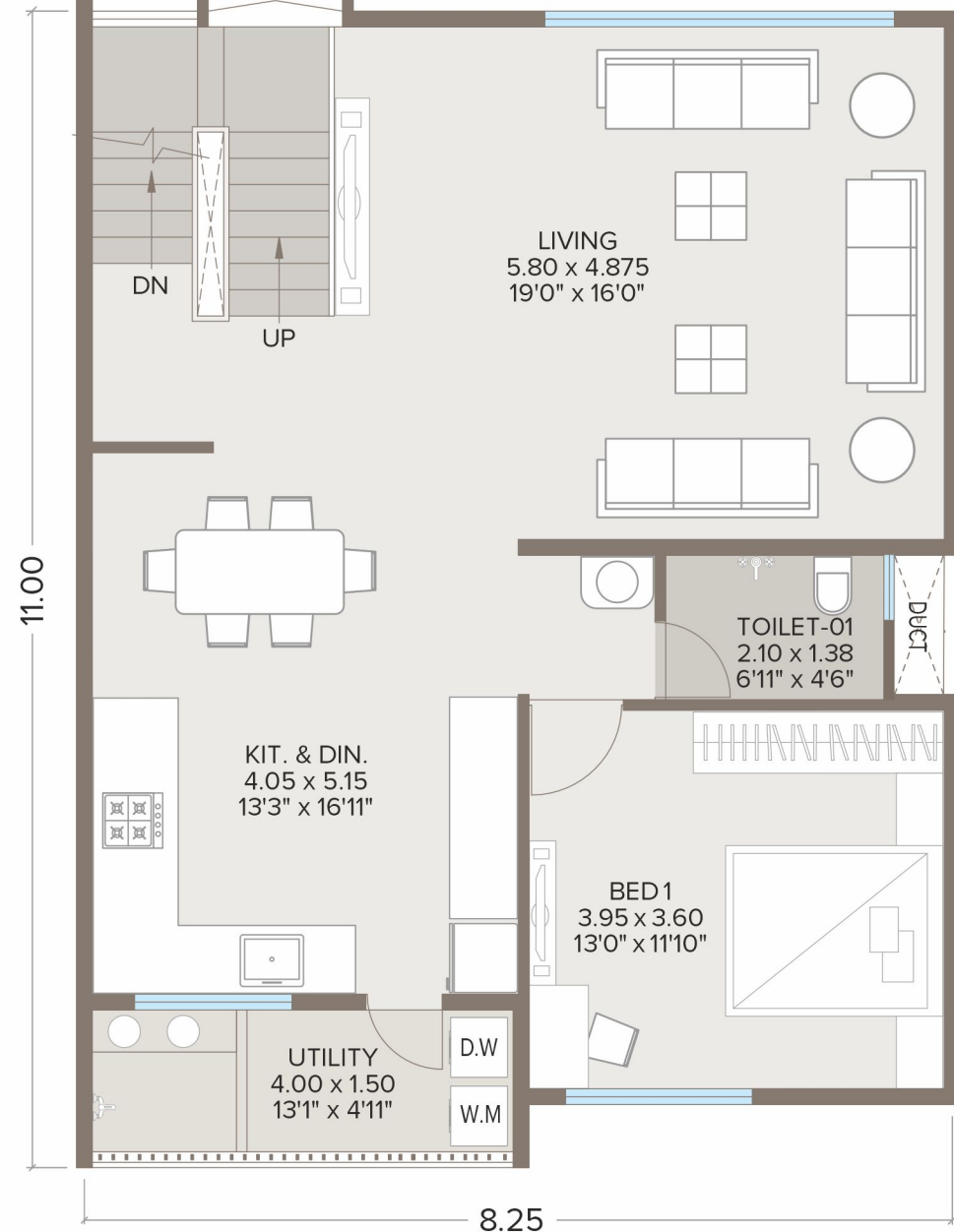


TERRACE FLOOR PLAN

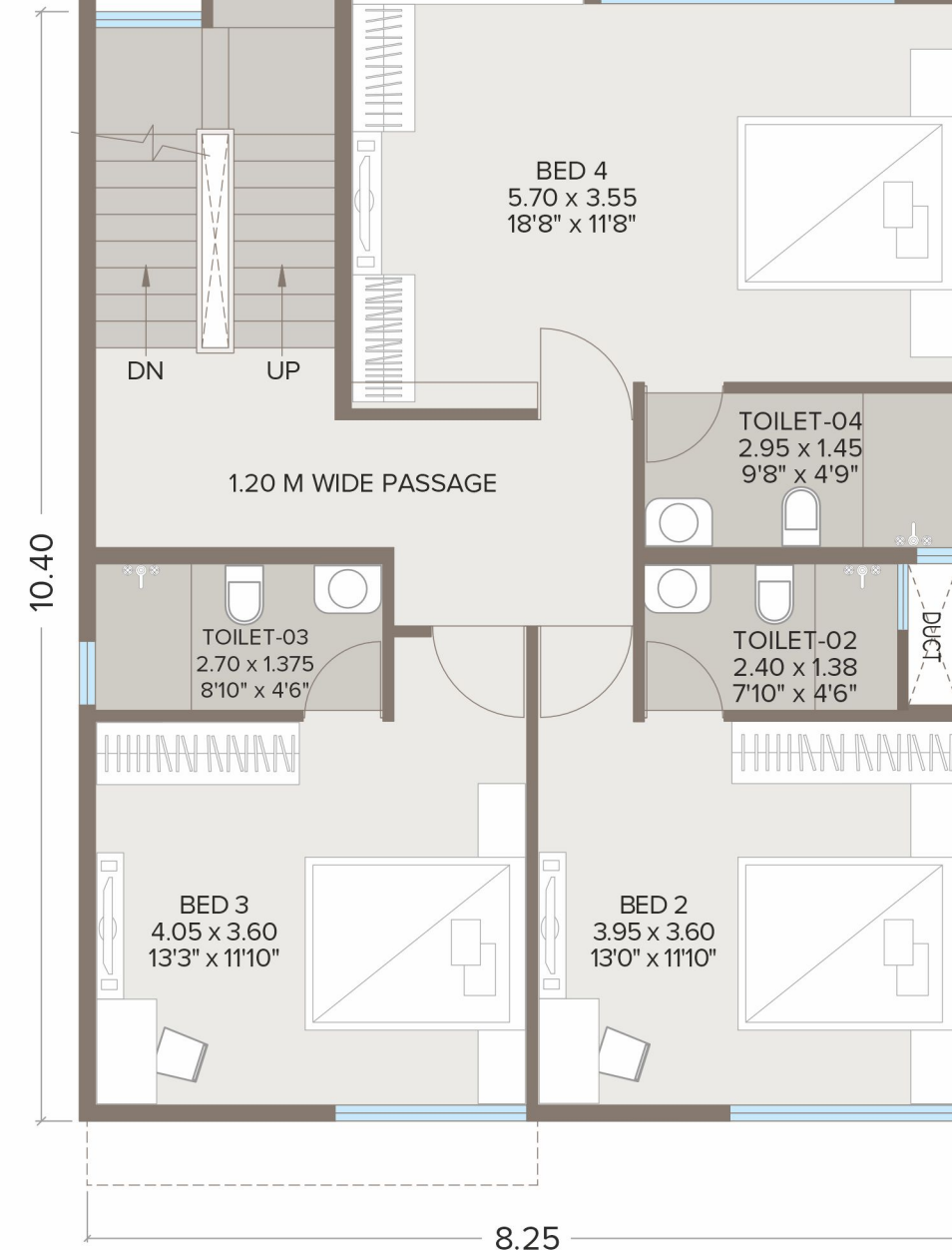
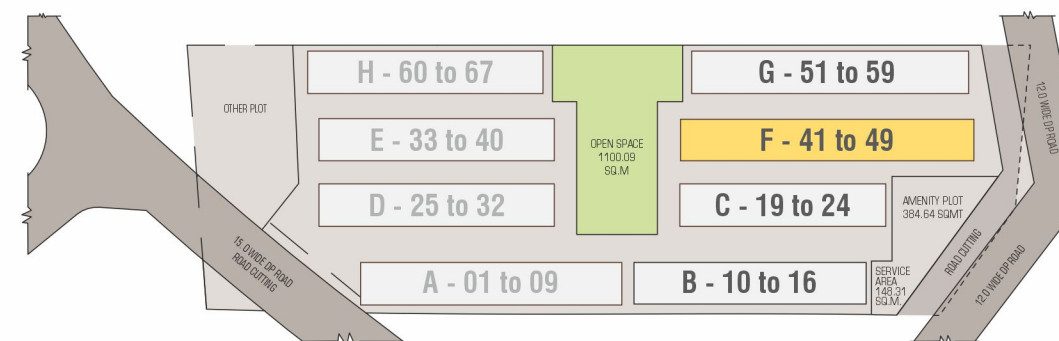




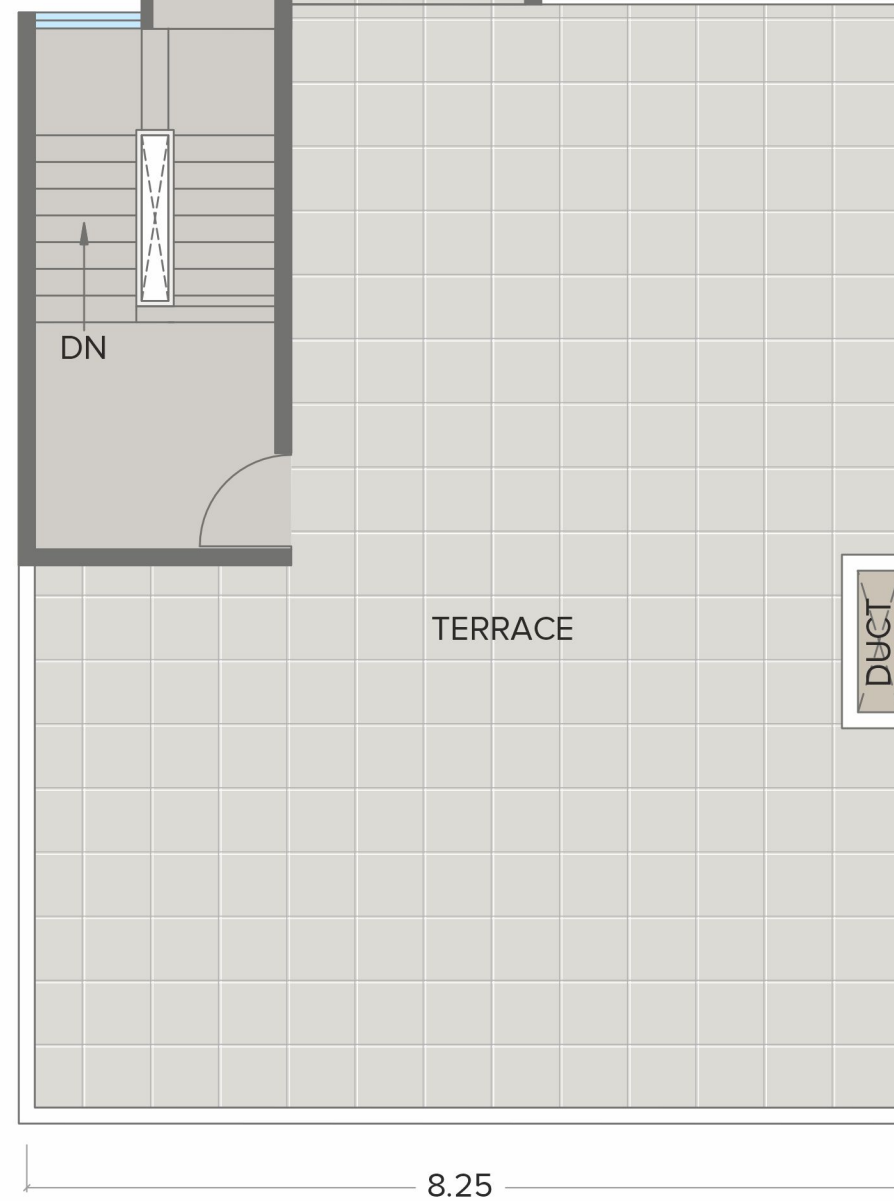
GROUND LEVEL - PARKING FLOOR PLAN



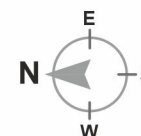
PODIUM LEVEL - FIRST FLOOR PLAN

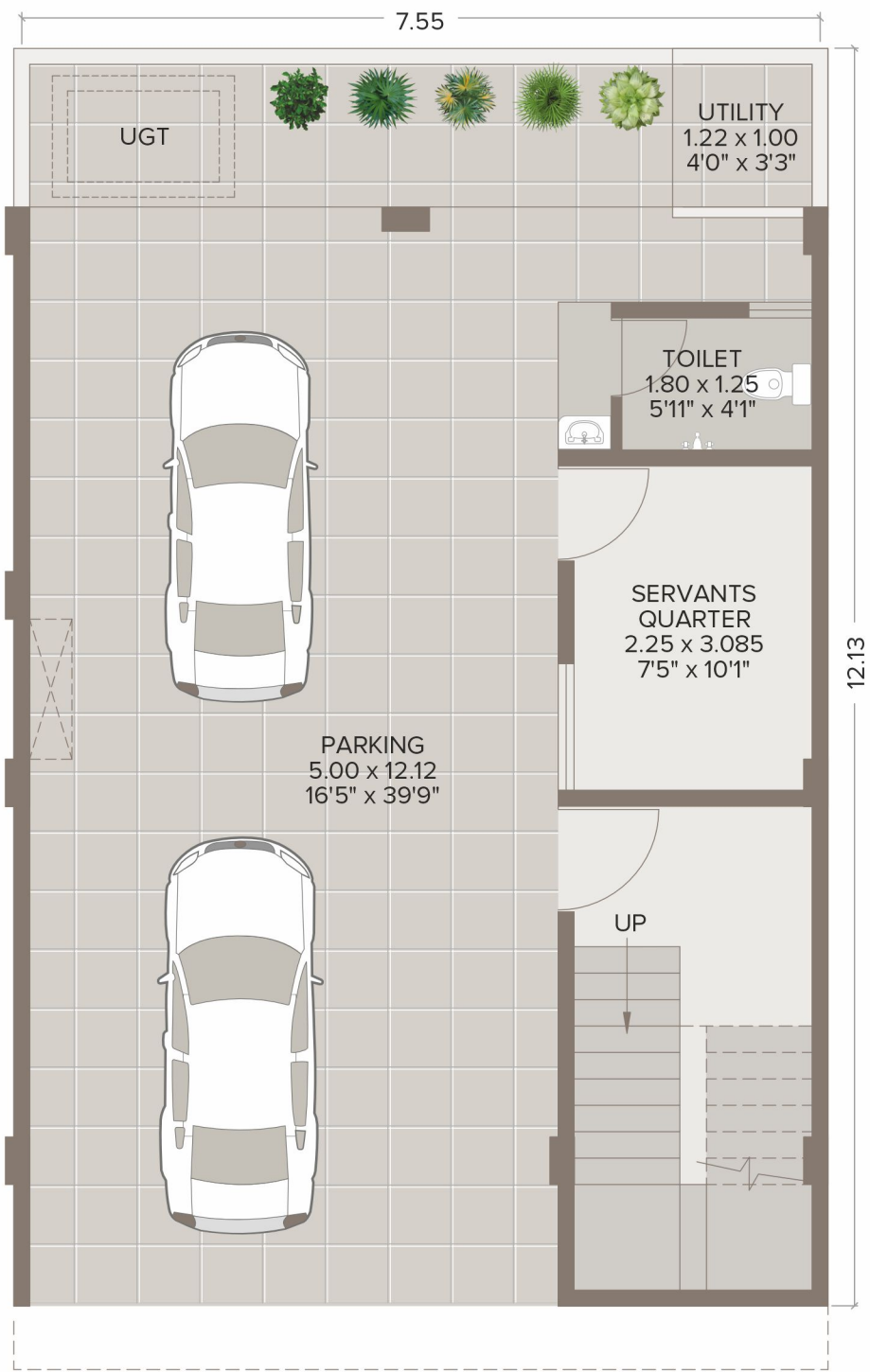


SECOND FLOOR PLAN

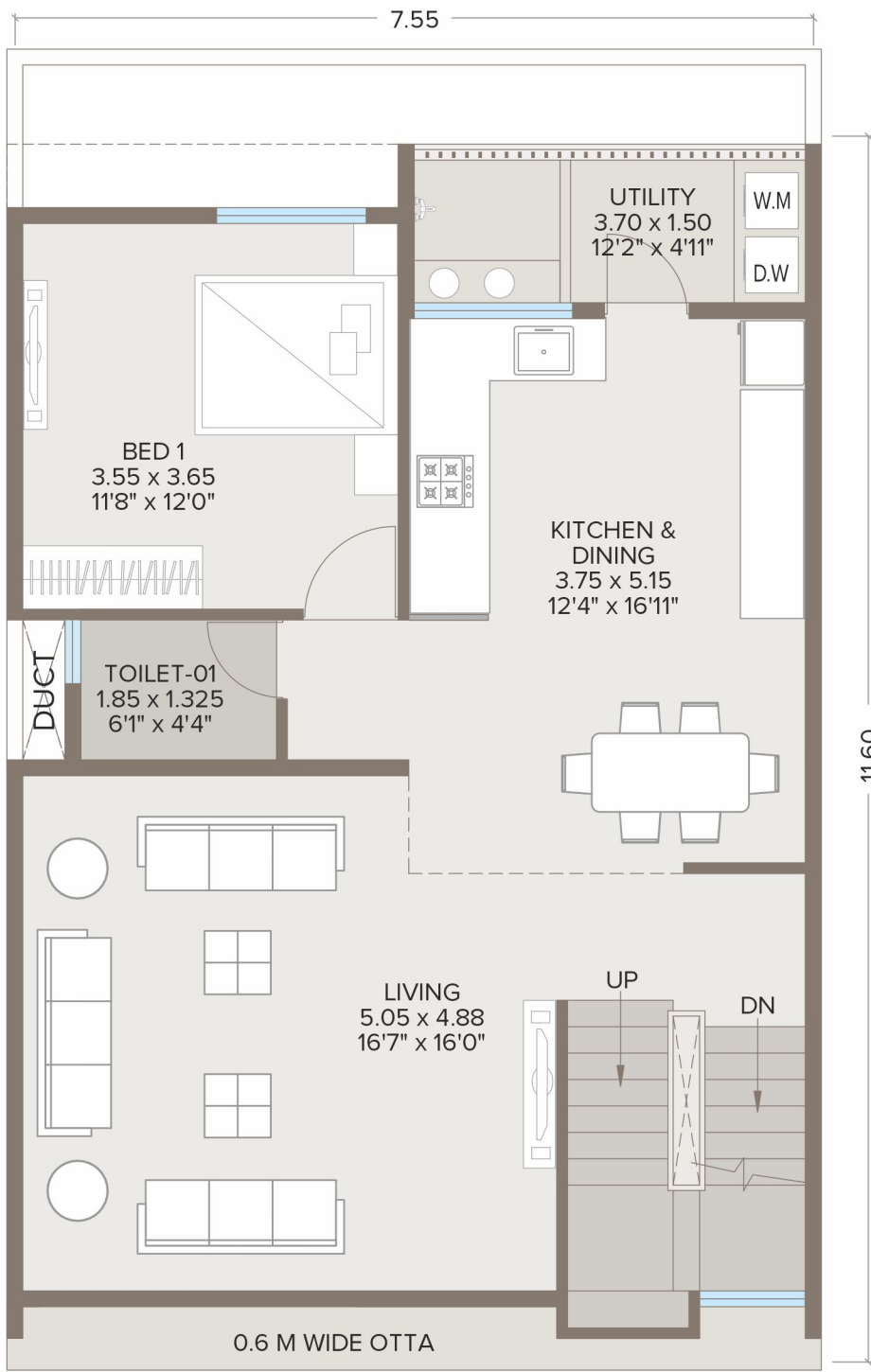


TERRACE FLOOR PLAN

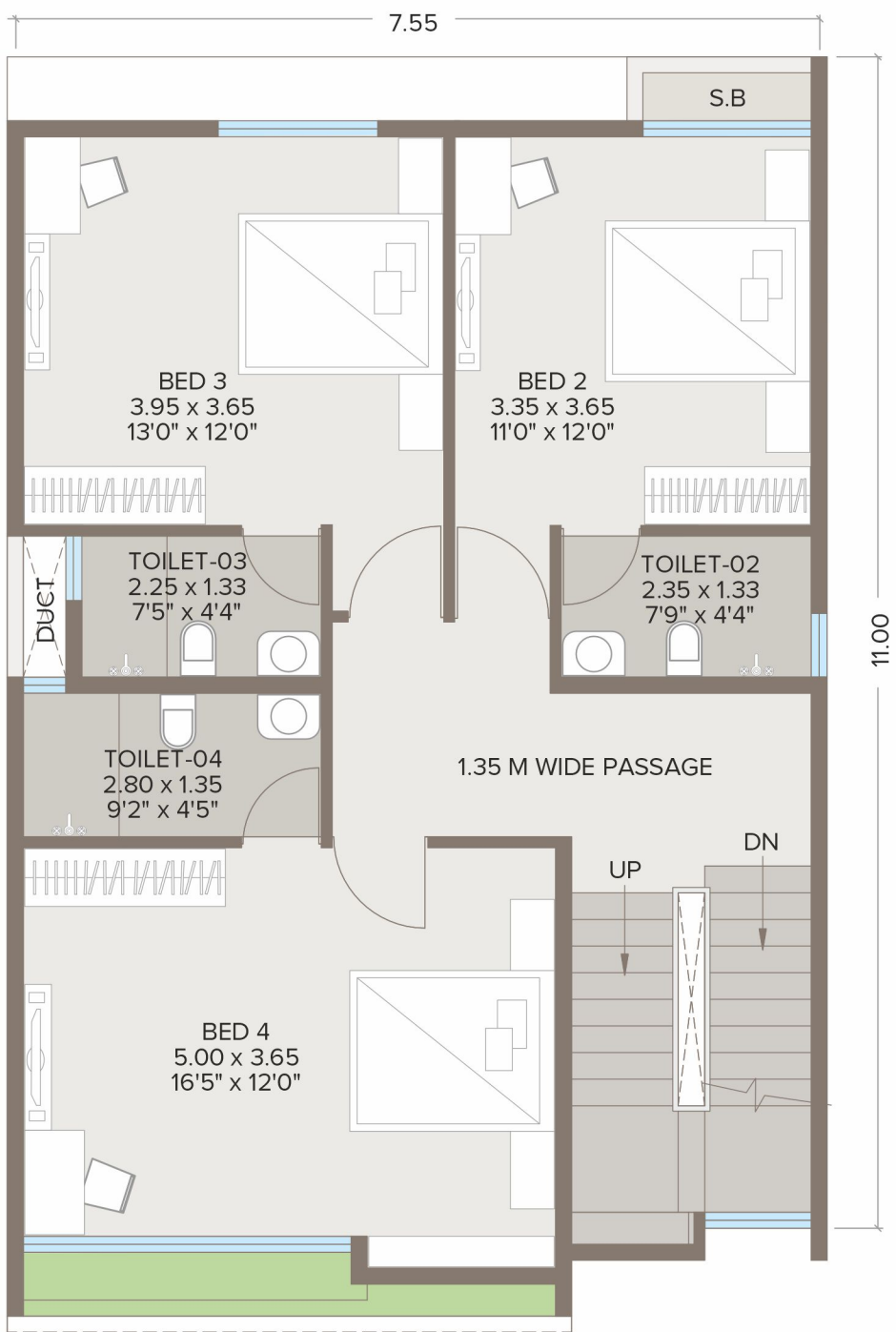
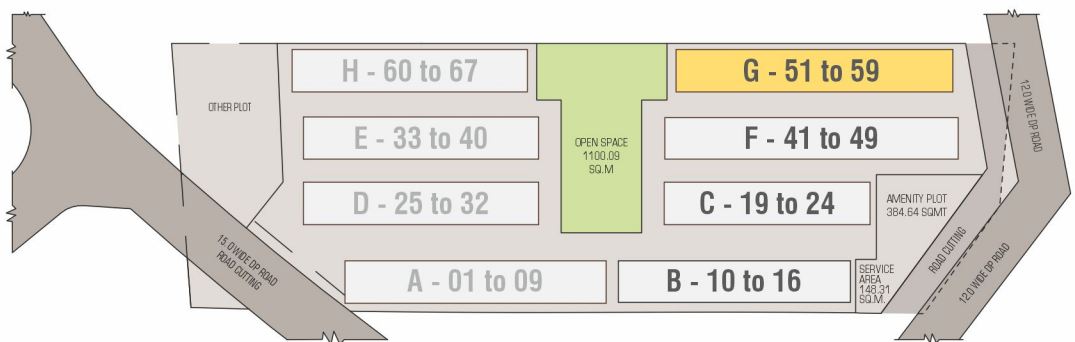




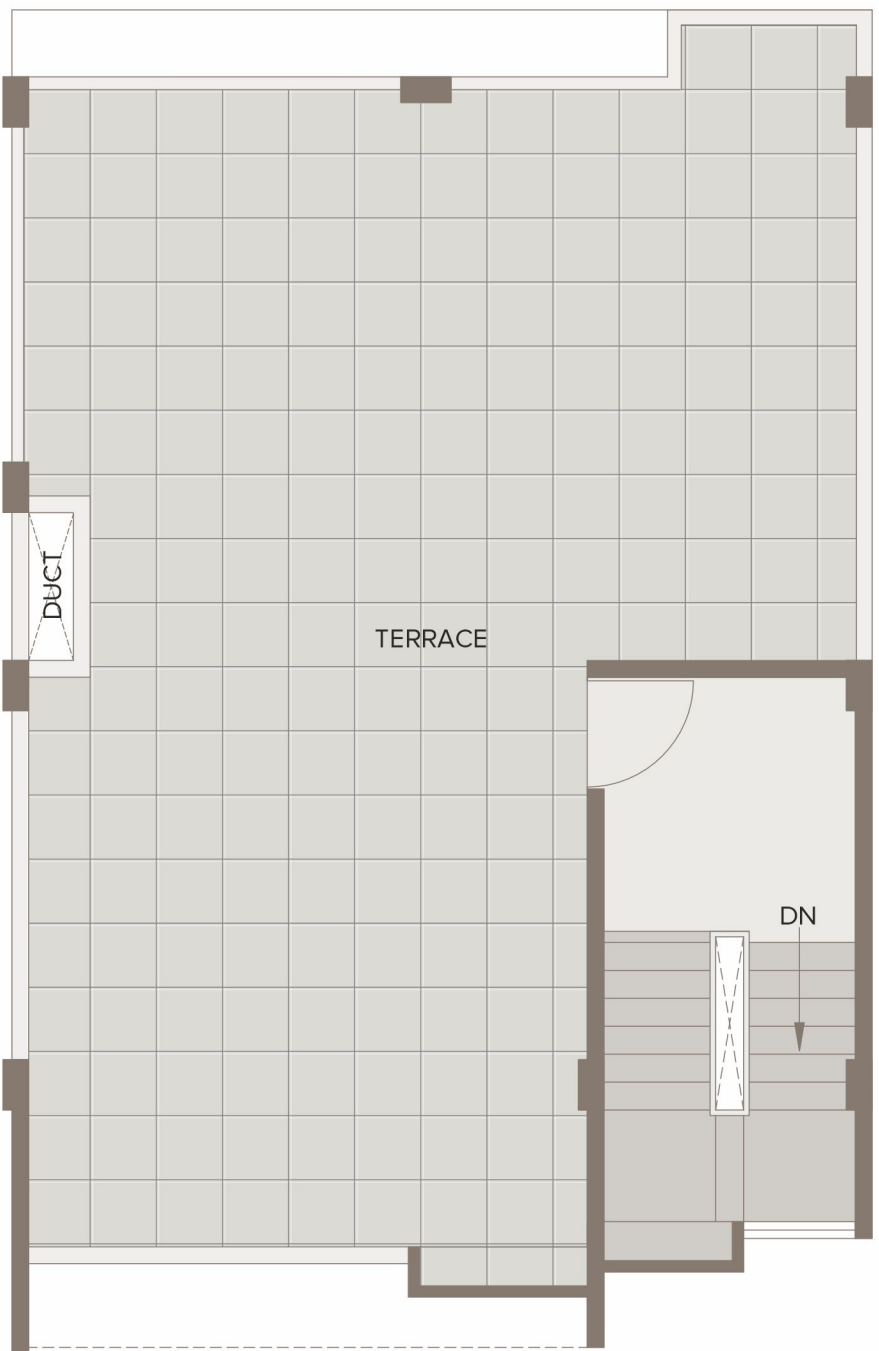
GROUND LEVEL - PARKING FLOOR PLAN



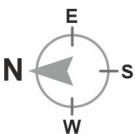
PODIUM LEVEL - FIRST FLOOR PLAN



SECOND FLOOR PLAN



TERRACE FLOOR PLAN





PODIUM FLOOR



GROUND FLOOR PARKING

Specifications

ITEM	DESCRIPTION	BRAND
PLASTER & PAINT		
Internal plaster	Putty / Gypsum finish	One coat Elite MR or equivalent
External plaster	Double coat and texture	
Internal paint	Acrylic Emulsion	Asian or equivalent
External paint	Acrylic / Texture Paint	Asian or equivalent
FLOORING / DADO TILES		
Lobby, hall, dining, kitchen, passage - GVT	1000 x 1000 / 800 x 800	Simpolo / Kajaria or equivalent
Bed rooms - GVT	800 x 800	Simpolo or equivalent
Toilet dado	300 x 600	Simpolo or equivalent
Stair case steps	Natural Stone / Vitrified Tiles / Granite	Kajaria or equivalent
KITCHEN		
Kitchen platform in granite		
Stainless sink with drain board	As per drawing	Nirali or equivalent
Gas leakage detector		
TOILETS		
Sanitary fixtures		Jaquar / Hindware or equivalent
Plumbing fixtures		Jaquar / Hindware or equivalent
Ventilation	Mechanical	
DOOR		
Main Door - Frame & Shutter	Prehung engineered doors with Digital Lock	
Internal Doors	Prehung engineered doors with Lock	
WINDOW		
Heavy section anodized aluminium windows with mosquito net	Granite framing all around window	
ELECTRIFICATION		
Electrical points	Ample	
Modular switches		Legrand or equivalent
Multi stranded cables		Finolex or equivalent
RAILING		
Staircase	SS Railing	
SECURITY & SAFETY		
Video door phone	At Main Door of every Villo	CP Plus or equivalent
CCTV surveillance	In campus & common areas	CP Plus or equivalent
Safety door	At Main Door of every Villo	
ECO FRIENDLY AMENITIES		
Rain Water harvesting	In Villas and common areas	
Waste water treatment plant	In campus and common areas	
E-Scooter	For common use on podium only	
Re-cycled water	For garden purpose	
LIFT		
Common Lift with backup	For podium	Schindler or equivalent



features



Video Door Bell



Designer Street Lights



Independent 4 / 2 wheeler parking for each unit



Motion Lights in parking



24 hr CCTV surveillance in common area



Corporation water supply



Maha Rera Registration No. :
P51500024894
<https://maharera.mahaonline.gov.in>

CREDAI
AURANGABAD



CREDITS

Architect
SAMIL ARCHITECTS

Structural Consultant
CORE CONSULTANTS

Legal Advisor
ADV. ANIL MALANI

3D Rendering
3D POWDER

Brand & Media Consultant
MICROGRAFIX

Digital Marketing
Urban BHK Technologies

A JOINT VENTURE OF



PROJECT BY



CHOUDHARY BHAISHREE LANDMARKS LLP

Site : Gut No 44, Before Ryan International School, Itkheda, Paithan Road Aurangabad

Call us on - 8882 567 567

www.villo67.com

Follow us on :